

Phycological Research

Volume 62 • Issue 4 • October 2014

Ashira Roopnarain, Vincent M. Gray and Stuart Sym <i>Influence of nitrogen stress on Isochrysis galbana strain U4, a candidate for biodiesel production</i>	237
Hexin Lv, Shiru Jia, Yupeng Xiao, Nannan Yuan and Yujie Dai <i>Growth characteristics of Nostoc flagelliforme at intermittent elevated CO₂ concentrations</i>	250
Mitsufumi Matsumoto, Shigeki Mayama, Michiko Nemoto, Yorikane Fukuda, Masaki Muto, Tomoko Yoshino, Tadashi Matsunaga and Tsuyoshi Tanaka <i>Morphological and molecular phylogenetic analysis of the high triglyceride-producing marine diatom, Fistulifera solaris sp. nov. (Bacillariophyceae)</i>	257
Miriam Windler, Dariia Bova, Anastasiia Kryvenda, Dietmar Straile, Ansgar Gruber and Peter G. Kroth <i>Influence of bacteria on cell size development and morphology of cultivated diatoms</i>	269
Patrick Rioual, Yanbin Lu, Guoqiang Chu, Bingqi Zhu and Xiaoping Yang <i>Morphometric variation of Seminavis pusilla (Bacillariophyceae) and its relationship to salinity in inter-dune lakes of the Badain Jaran Desert, Inner Mongolia, China</i>	282
Karolina Fučíková, Paul O. Lewis and Louise A. Lewis <i>Widespread desert affiliation of trebouxiophycean algae (Trebouxiophyceae, Chlorophyta) including discovery of three new desert genera</i>	294
Natalia Arakaki, Masahiro Suzuki and Suzanne Fredericq <i>Halarachnion (Furcellariaceae, Rhodophyta), a newly reported genus for the Gulf of Mexico, with the description of Halarachnion louisianensis sp. nov.</i>	306
Wilson Thau Lym Yong, Jamie Yan Yung Chin, Vun Yee Thien and Suhaimi Yasir <i>Evaluation of growth rate and semi-refined carrageenan properties of tissue-cultured Kappaphycus alvarezii (Rhodophyta, Gigartinales)</i>	316
Book Review	322
Referees	323

Phycological Research

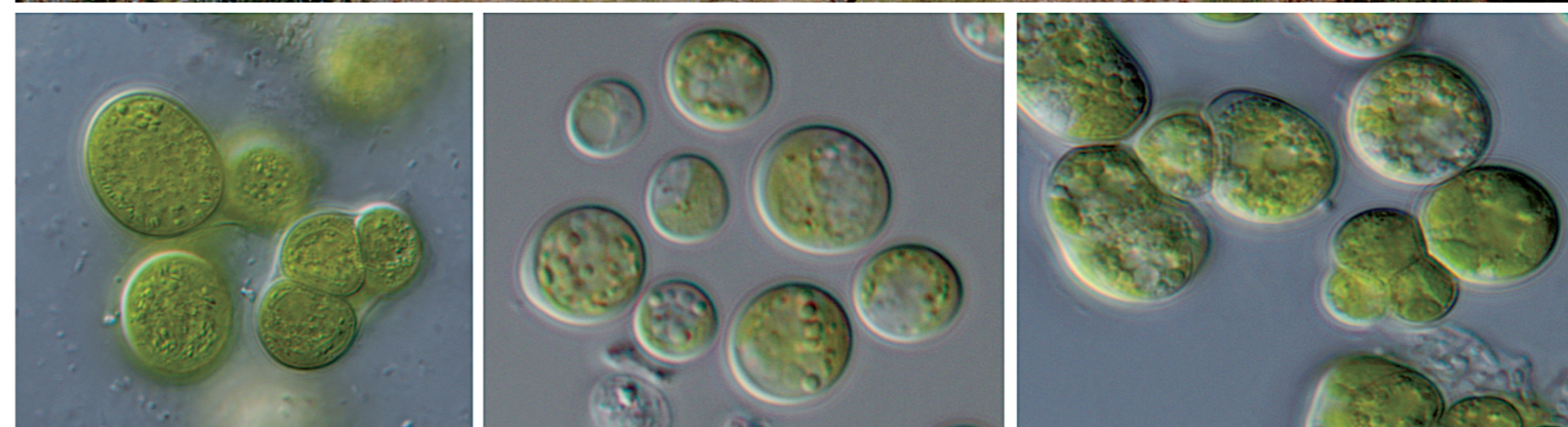
Journal Phycological Research
will be going online only in 2015

Phycological Research

Volume 62 • Issue 4 • October 2014

ISSN 1322-0829

Volume 62, Issue 4, October 2014, Pages 237-324



WILEY

WILEY

The Japanese
Society of
Phycology

Phycological Research

EDITOR-IN-CHIEF

Mitsunobu Kamiya

Faculty of Marine Bioscience, Fukui Prefectural University, Fukui, Japan

ASSOCIATE EDITORS

Jaanika Blomster
Dept. of Environmental
Sciences, University of
Helsinki, Finland

Daisuke Honda
Department of Biology,
Faculty of Science and
Engineering, Konan
University, Japan

Mona Hoppenrath
Senckenberg Research
Institute, German
Centre for Marine
Biodiversity Research,
Germany

Mitsunori Iwataki
Asian Natural
Environmental Science
Center, University of
Tokyo, Japan

Regine Jahn
Botanic Garden and
Botanical Museum
Berlin-Dahlem, Freie
Universität Berlin,
Germany

Ulf Karsten
Institute of Biological
Sciences, University of
Rostock, Germany

Christos Katsaros
Department of Botany,
Faculty of Biology,
University of Athens,
Greece

Masanobu Kawachi
Environmental Biology
Division, National
Institute for
Environmental Studies,
Japan

Jeong Ha Kim
Department of
Biological Sciences,
Sungkyunkwan
University, Korea

Tatyana A. Klochkova
Department of Biology,
Kongju National
University, Korea

Showe-Mei Lin
Institute of Marine
Biology, National
Taiwan Ocean
University, Taiwan

Ichiro Mine
Graduate School of
Kuroshio Science,
Kochi University, Japan

Rei Narikawa
Department of Biological
Science, Shizuoka
University, Japan

Wendy Nelson
National Institute of
Water & Atmospheric
Research & SBS,
University of Auckland,
New Zealand

Gregory N. Nishihara
Institute of East China
Sea Research,
Nagasaki University,
Japan

Tatsufumi Okino
Faculty of Environmental
Earth Science,
Hokkaido University,
Japan

Hiroyuki Sekimoto
Department of Chemical
and Biological Sciences,
Faculty of Science,
Japan Women's
University, Japan

Kensuke Toyoda
Department of Biology,
Keio University, Japan

John A. West
School of Botany,
University of
Melbourne, Australia

Giuseppe C. Zuccarello
School of Biological
Sciences, University of
Wellington, New
Zealand

This journal is available online at *Wiley Online Library*. Visit wileyonlinelibrary.com to search the articles and register for table of contents email alerts.

Access to this journal is available free online within institutions in the developing world through the AGORA initiative with the FAO, and the OARE initiative with UEP. For information, visit <http://www.aginternetwork.org>, www.oarescience.org.

AIMS AND SCOPE *Phycological Research* is published by the Japanese Society of Phycology and complements the *Japanese Journal of Phycology*. The Journal publishes international, peer-reviewed research dealing with all aspects of phycology to facilitate the international exchange of results. All articles are peer-reviewed by at least two researchers expert in the field of the submitted paper. *Phycological Research* has been credited by the International Association for Plant Taxonomy for the purpose of registration of new non-vascular plant names (including fossils). For further information see <http://bgbm3.bgbm.fu-berlin.de/iapt/registration/journals/htm>.

ABSTRACTING AND INDEXING SERVICES This journal is indexed by Aquatic Sciences & Fisheries Abstracts, BIOBASE, Biological Abstracts, BIOSIS Previews, Biotechnology & Bioengineering Abstracts, Cambridge Scientific Abstracts, Chemical Abstracts Service, Current Awareness in Biological Sciences, Current Contents, Ecological Abstracts, EMBASE/Excerpta Medica, Environmental Sciences and Pollution Management, GEOBASE, Irrigation and Drainage Abstracts, Microbiology Abstracts, Oceanic Abstracts, Pollution Abstracts, ProQuest (previously University Microfilms), Referativnyi Zhurnal, Science Citation Index (ISI), Soils and Fertilizers, Weed Abstracts, Zoological Record, National Inquiry Services Centre (NISC).

THE JAPANESE SOCIETY OF PHYCOLOGY We invite anyone who is interested in any aspect of phycology to become a member of the Society. As a member you will receive *Phycological Research* and the *Japanese Journal of Phycology* free of charge. The annual membership fee for individuals ¥8000. Members who reside outside Japan will receive only the English language journal *Phycological Research* and the annual membership fee is ¥7000 (standard), ¥5000 (student)

Those who wish to join the Society should send the application form (at the back of each issue of the Journal), together with payment, to the Membership Secretary, Dr Shinya Yoshikawa, at the address given on the form. Members who wish to claim for missing or damaged issues should contact the Membership Secretary.

ADDRESS FOR EDITORIAL CORRESPONDENCE Mitsunobu Kamiya, Faculty of Marine Bioscience, Fukui Prefectural University, 1-1 Gakuencho, Obama, Fukui 917-0003, Japan (E-mail: mkamiya@fpu.ac.jp).

DISCLAIMER The Publisher, Japanese Society of Phycology and Editors cannot be held responsible for errors or any consequences arising from the use of information contained in this journal; the views and opinions expressed do not necessarily reflect those of the Publisher, Japanese Society of Phycology and Editors, neither does the publication of advertisements constitute any endorsement by the Publisher, Japanese Society of Phycology and Editors of the products advertised.

Copyright © 2014 Japanese Society of Phycology.

Cover Desert-dwelling algae and their habitat. Top: Microscopic green algae are members of taxonomically diverse biological soil crust communities that occur in arid lands worldwide. San Rafael Swell, a sedimentary rock formation in south-central Utah, U.S.A., has well developed soil crust communities. (Photo by L.A. Lewis). Bottom, from left to right: *Chloropyryula* sp., *Leptochlorella* sp., and *Myrmecia* sp., green algae of the class Trebouxiophyceae found in desert soil crusts in California, Israel, and New Mexico, respectively (Photos by K. Fučíková). See Fučíková et al. in this issue for details.

Note to NIH Grantees

Pursuant to NIH mandate, Wiley Blackwell will post the accepted version of contributions authored by NIH grant-holders to PubMed Central upon acceptance. This accepted version will be made publicly available 12 months after publication. For further information, see www.wiley.com/go/nihmandate.

For submission instructions, subscription and all other information visit <http://wileyonlinelibrary.com/journal/pre>

ISSN 1322-0829 (Print) ISSN 1440-1835 (online)

PRE.JEB.Oct14

The Japanese Society of Phycology

Officers for 2013–2014

President: Jiro Tanaka *Tokyo University of Marine Science and Technology, Japan*

Secretary: Hidekazu Suzuki *Tokyo University of Marine Science and Technology, Japan*

Treasurer: Takanori Matsuoka *Nippon Dental University, Tokyo, Japan*

Membership Secretary: Satoko Sekida *Kochi University,*

Japan; Shinya Yoshikawa Fukui Prefectural University, Japan

Public Relations Secretary: Kensuke Toyoda *Keio University, Japan*

Secretary for International Affairs: Shin-ichiro Abe *National Research Institute, Fisheries Research Agency, Japan*

Members of Executive Council 2013–2014

Put O. Ang Jr. *The Chinese University of Hong Kong, China*

Taira Enomoto *Kobe University, Japan*

Daisuke Fujita *Tokyo University of Marine Science and Technology, Japan*

Masahiko Idei *Bunkyo University, Japan*

Masanobu Kawachi *National Institute for Environmental Studies, Japan*

Kazuhiro Kogame *Hokkaido University, Japan*

Kazuyoshi Kuwano *Nagasaki University, Japan*

Ichiro Mine *Kochi University, Japan*

Daisuke Muraoka *Tohoku National Fisheries Research Institute, Japan*

Tamotsu Nagumo *The Nippon Dental University, Japan*

Takeshi Nakayama *University of Tsukuba, Japan*

Wendy A. Nelson *The National Institute of Water and Atmospheric Research, New Zealand*

Tadahide Noro *Kagoshima University, Japan*

Claude E. Payri *Institut de Recherche pour le Developpement, France*

Hidetoshi Sakayama *Kobe University, Japan*

Yukihiko Serisawa *University of Yamanashi, Japan*

Yoshihiro Shiraiwa *University of Tsukuba, Japan*

Shinya Uwai *Niigata University, Japan*

Goro Yoshida *National Research Institute of Fisheries and Environment of Inland Sea, Japan*

JOIN THE JAPANESE SOCIETY OF PHYCOLOGY AND RECEIVE FOUR ISSUES OF PHYCOLOGICAL RESEARCH PER YEAR FREE OF CHARGE

The Japanese Society of Phycology, founded in 1952, currently has 685 members (including 68 overseas members). The Society is open to anyone who is interested in pure or applied aspects of phycology.

Application for membership

(Please type or write in block letters) Membership starts from 2014

Name in full: _____, _____
(Family name) (Given name and initials)

Mailing address: _____

_____ (Postal code) (Country)

Telephone: _____ Fax: _____

E-mail: _____ Interests: _____

Signature: _____ Date: _____

**The annual fee for individual members is ¥8000
(¥7000 for members who reside outside Japan, ¥5000 for students who submit a verifying statement signed by their Chairperson or Head of Department)**

Payment by: Visa MasterCard American Express

Card number: _____ - _____ - _____ - _____ Expiry date: _____

Signature: _____

International postal money order

Send application form to: Shinya YOSHIKAWA
Department of Marine Bioscience,
Fukui Prefectural University
1-1 Gakuencho, Obama,
Fukui, 917-0003, Japan
PHONE +81-770-52-9608
FAX +81-770-52-9608
Email: syoshika@fpu.ac.jp